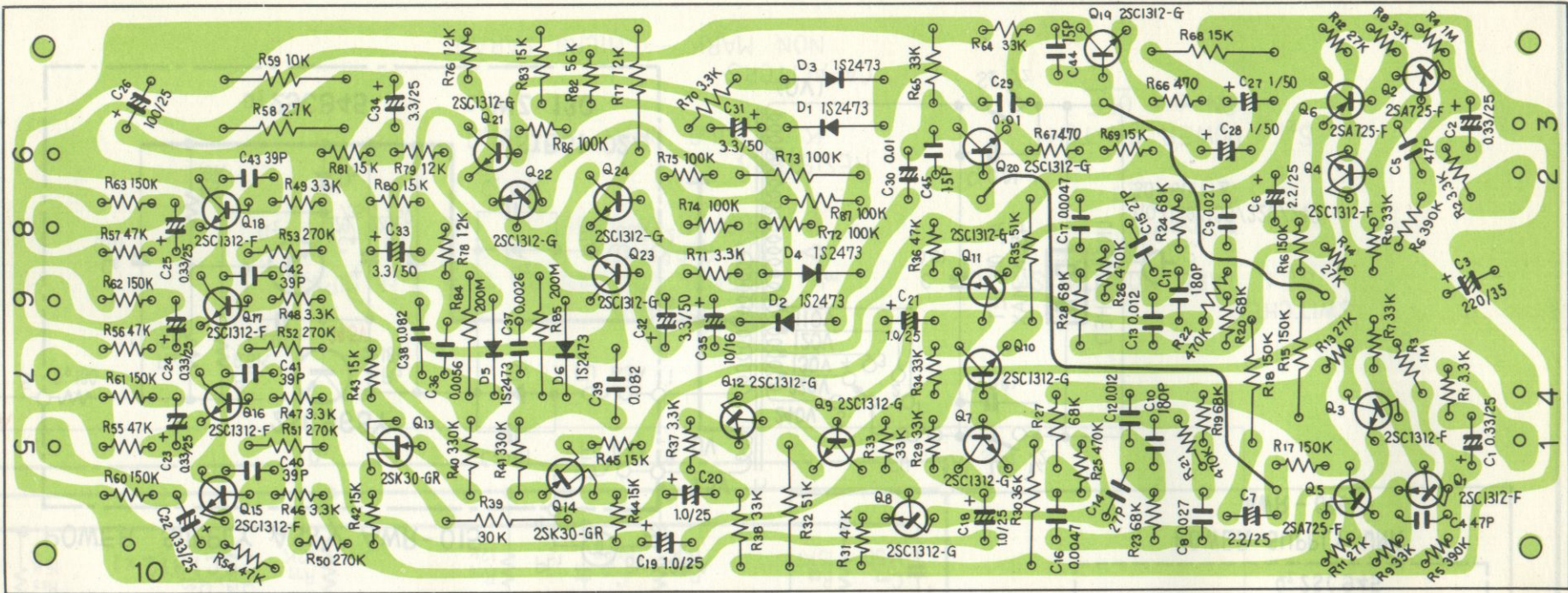


CD-4 DEMODULATOR

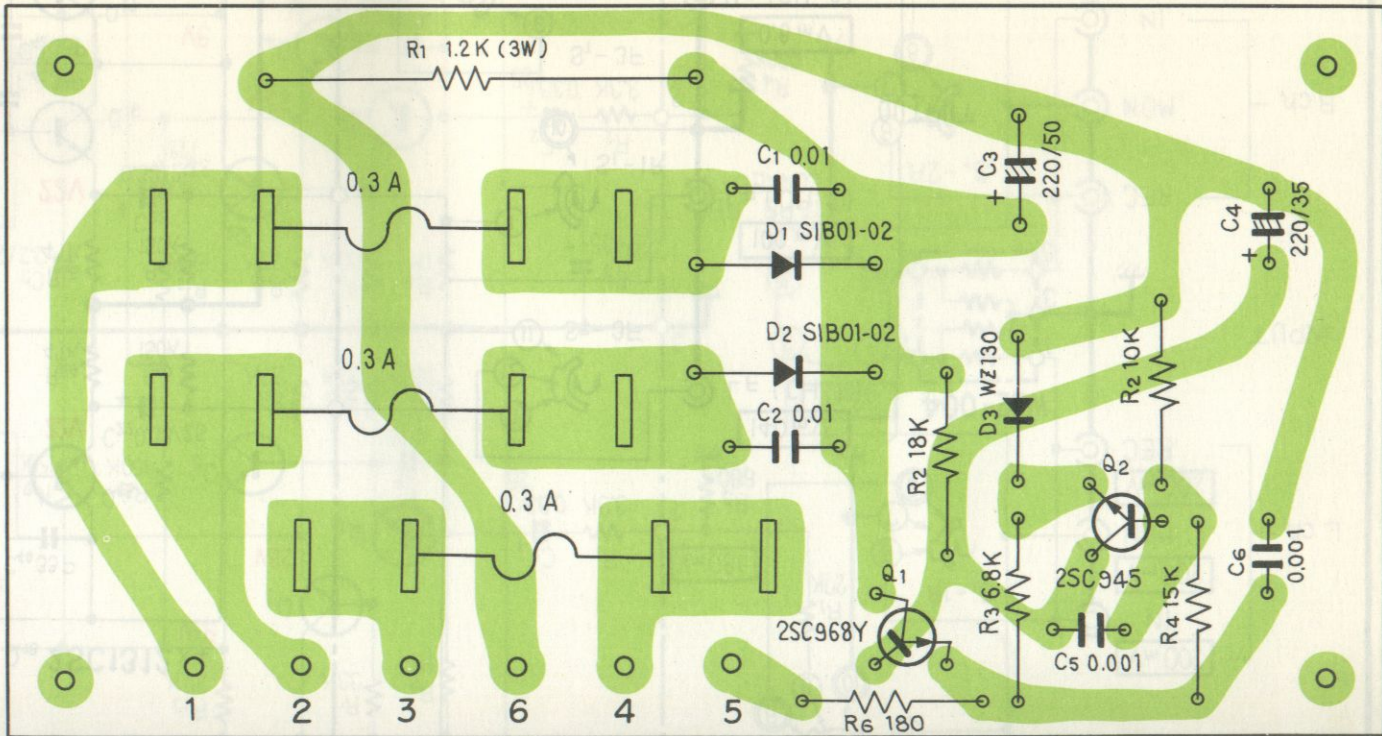
**QD-210**

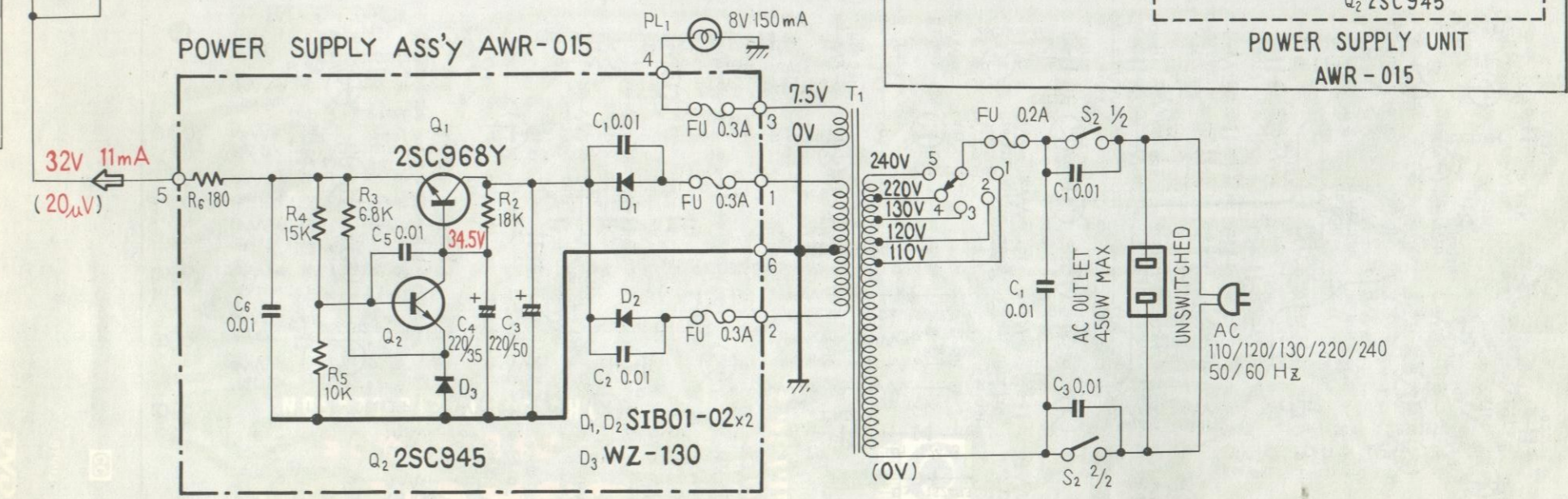
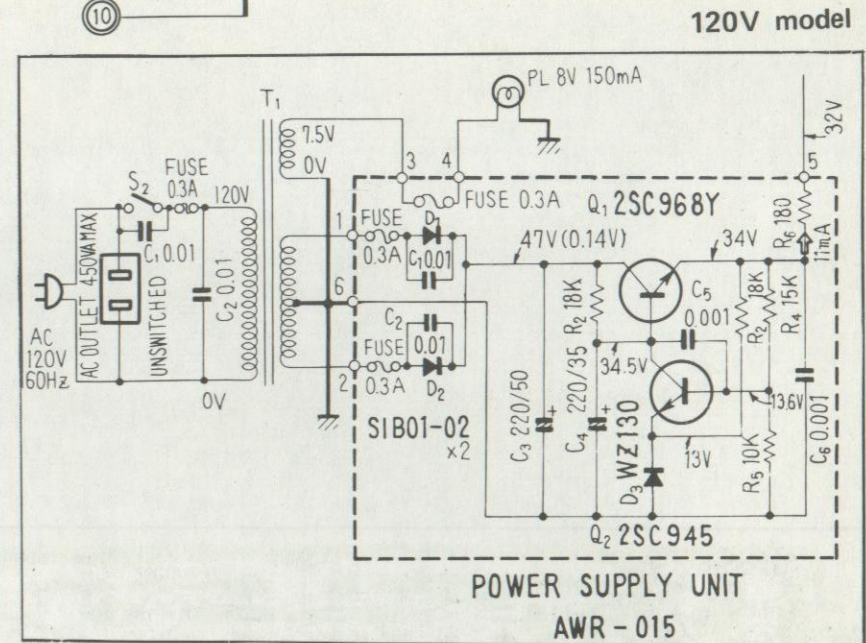
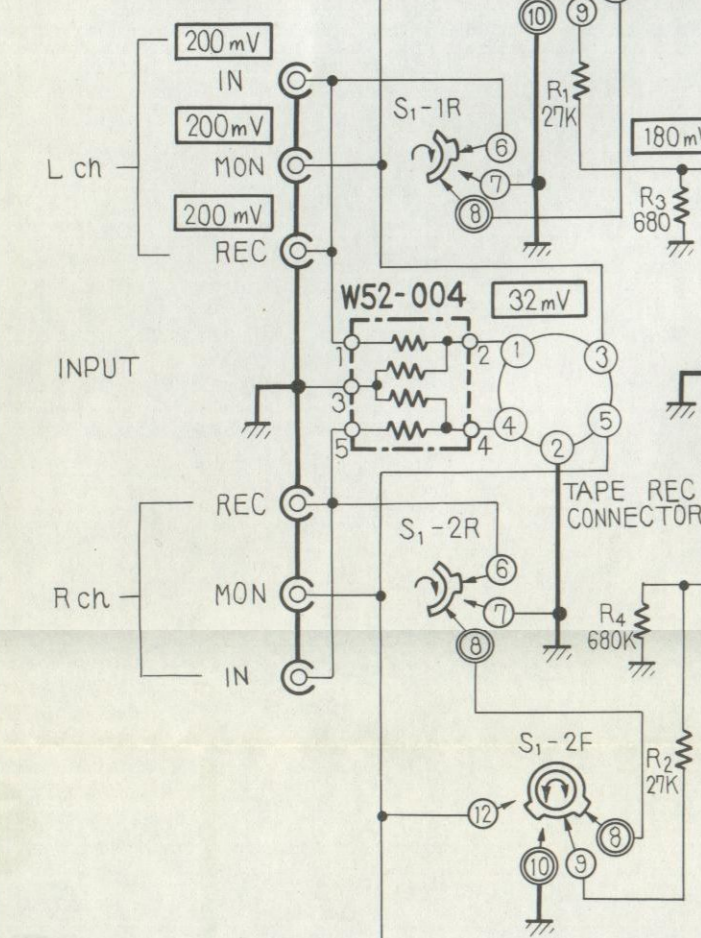
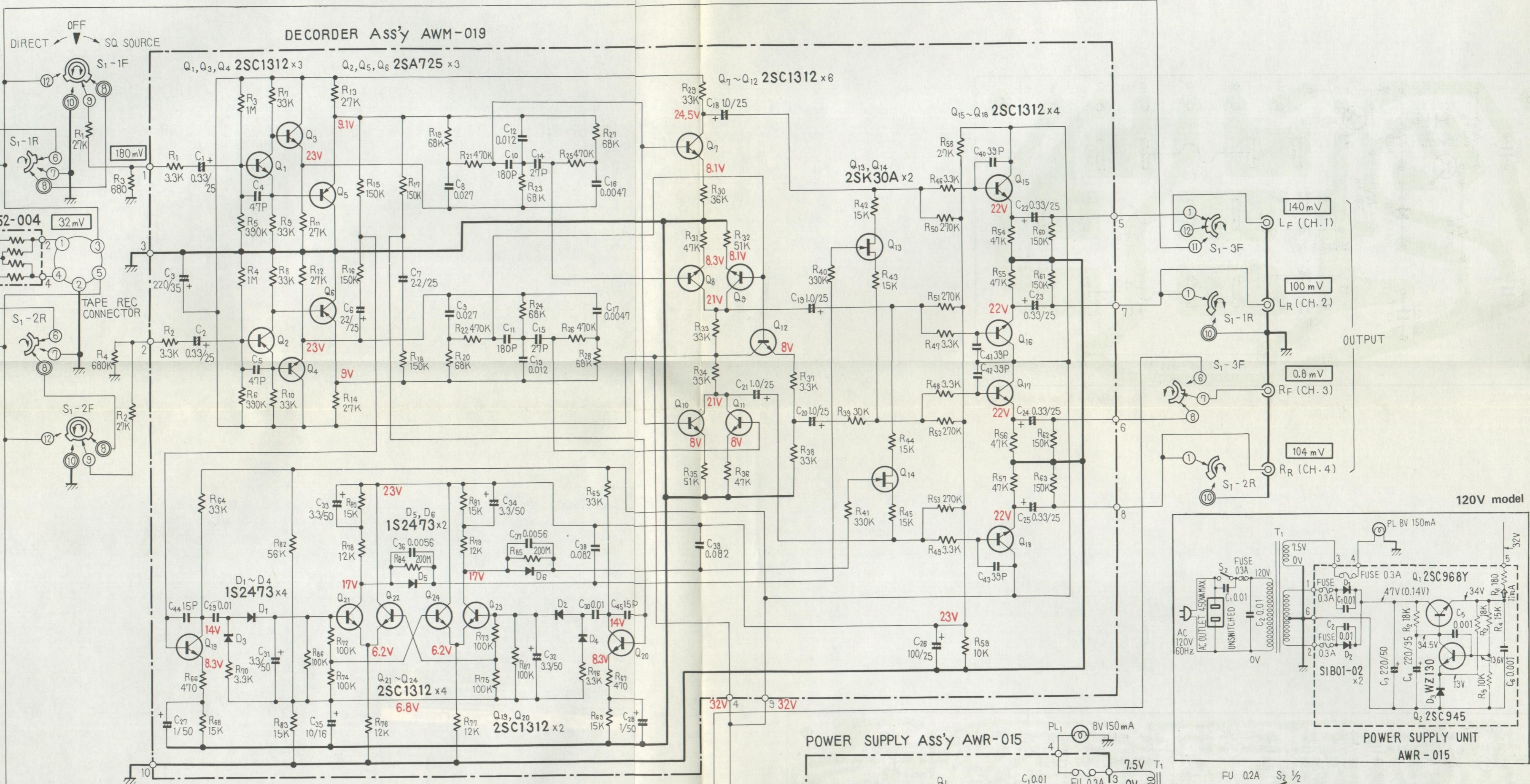
**FVW KLW**

Decoder ass'y AWM-019



Power supply ass'y AWR-015





- SWITCHES  
 S<sub>1</sub> : TAPE MONITOR SWITCH  
 1. SQ SOURCE  
 2. OFF  
 3. DIRECT  
 S<sub>2</sub> POWER SWITCH  
 ON → OFF
- V DC VOLTAGE  
 mV SIGNAL VOLTAGE AT 1KHz Lch INPUT  
 (μV) DC CURRENT  
 (μV) RIPPLE VOLTAGE
- RESISTORS  
 K ..... KILO OHM
- CAPACITORS  
 NON MARK ..... MICRO FARAD